

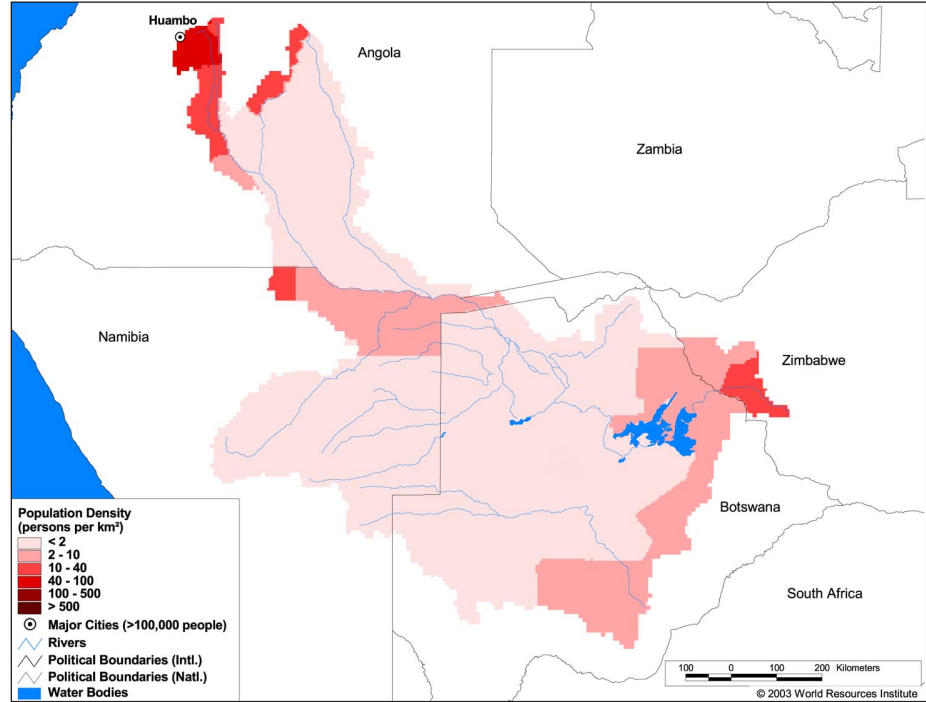
## Land Cover and Use Variables

Percent Forest Cover:	1.7
Percent Grassland, Savanna and Shrubland:	91.1
Percent Wetlands:	4.1
Percent Cropland:	5.5
Percent Irrigated Cropland:	0.0
Percent Dryland Area:	86.4
Percent Urban and Industrial Area:	0.2
Percent Loss of Original Forest Cover:	0.0



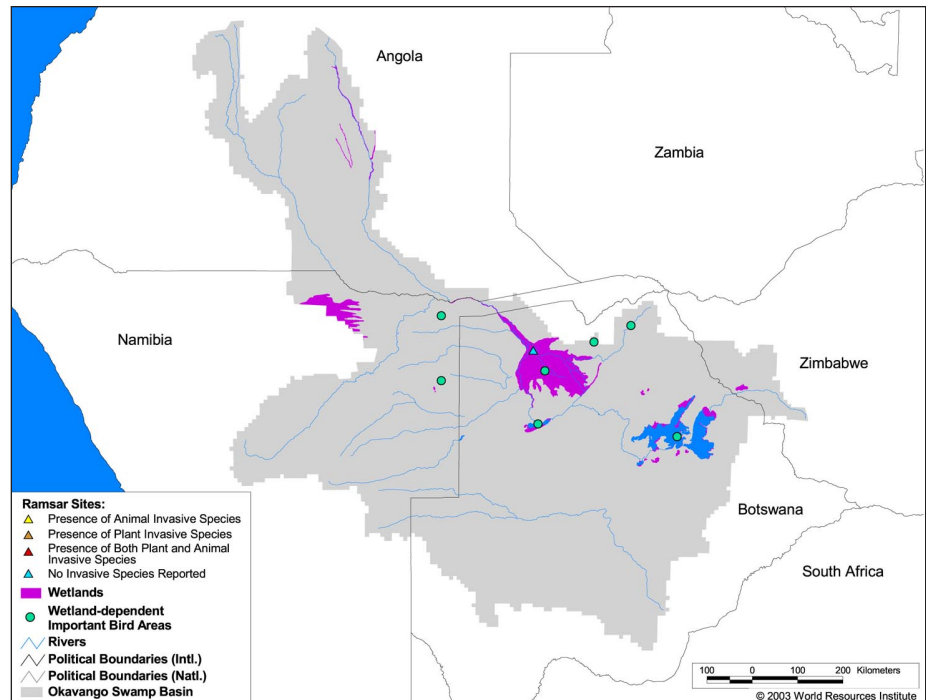
## Basin Indicators

Basin Area (sq. km.):	721,258
Average Population Density (people per sq. km.):	2
Number of Large Cities (>100,000 people):	1
Water Supply per Person (1995)(m <sup>3</sup> /year):	-
Degree of river fragmentation:	-
Number of Dams (>15m high) in Basin:	1
Number of Dams (>150m high) in Basin:	0
Number of Dams (>60m high) under Construction:	0
Number of Dams (>15m high) on Main Stem of River:	0
Number of Dams (>150m high) on Main Stem of River:	0



## Biodiversity Information and Indicators

Number of Fish Species:	80
Number of Fish Endemics:	0
Number of Amphibian Species:	55
Number of Ramsar Sites:	1
Number of Wetland-Dependent IBAs:	7
Number of Endemic Bird Areas:	1
Percent Protected Area:	12.1



Okavango River Basin Commission (OKACOM): <http://www.iwnn.com.na/namibianet/okacom>