



2022 Annual report



Discussion with Norad

June 2023

www.sustain.com

Agenda

10:00 – 10:05 Round of presentations

10:05 – 10:10 Short update from Norad

10:10 – 10:30 Summary of 2022 progress and results including financial report (IUCN presentation)

10:30 – 10:50 Discussion & recommendations including constraints, logframe

10:50 – 11:10 Looking ahead – 2023 and beyond, mid-term review

11:10 – 11:20 AOB – including possible missions, update call with Mozambique

11:20 – 11:25 Final remarks and Closure

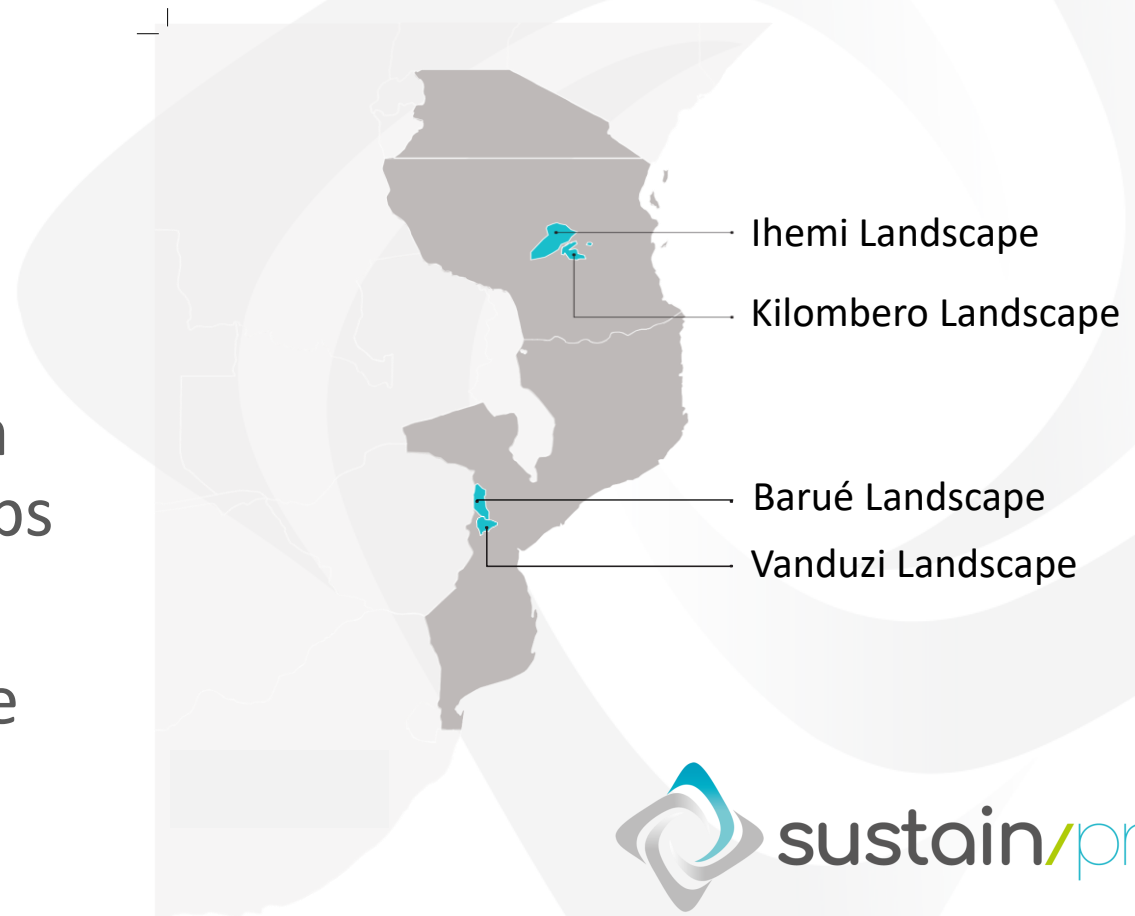


SUSTAIN Pro at a glance

Goal: Sustainable food systems and healthy productive landscapes in Mozambique and Tanzania

Delivered through:

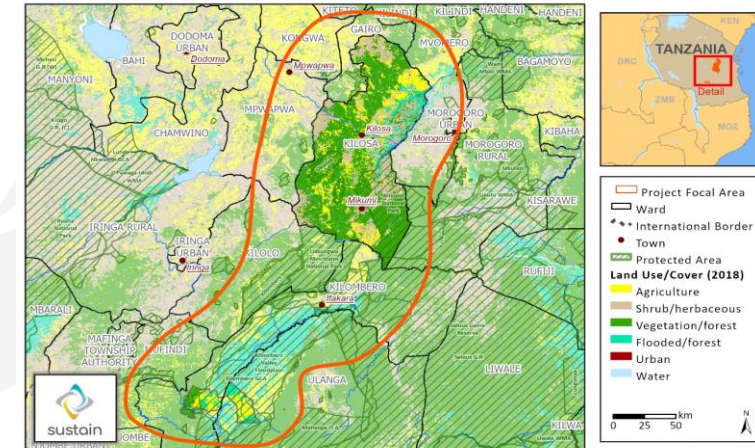
- i. upscaling solutions for sustainable agricultural production
- ii. restoring land health through multi-stakeholder partnerships
- iii. investing in sustainable and inclusive value chains to drive systemic change



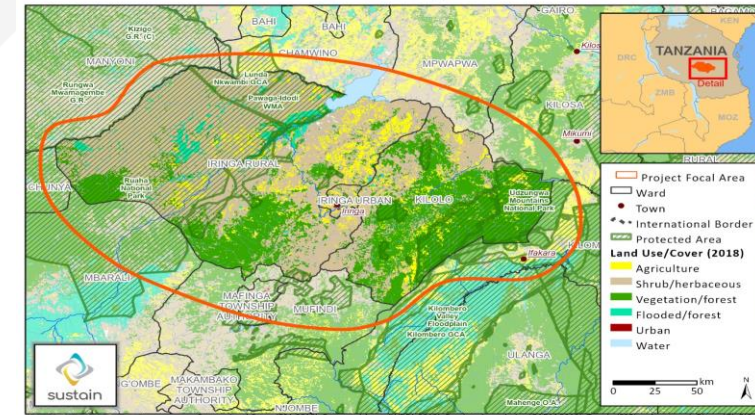
Inception phase

- From December 2021 to June 2022
- Programme Launch in Feb and May 2022
- Delineation of landscapes and intervention districts
- Contract for baseline assessment
- Operational set up
- Initiation of partnership discussions

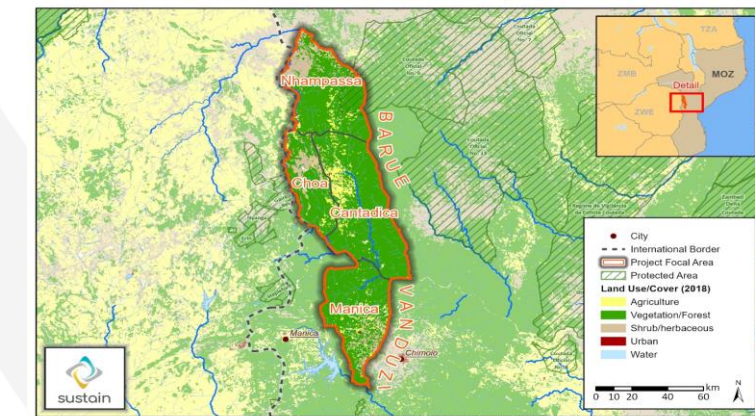
Kilombero Landscape Area



Ihemi Landscape Area



Barue and Vanduzi Landscape Area



Implementation

- **Outcome 1:** Solutions for sustainable agricultural production are scaled up
 - Mapping and prioritization of sustainable agriculture solutions
 - Identification of capacity gaps
 - Knowledge Hub Concept development for Mozambique
- **Outcome 2:** Land health restored using landscape partnerships
 - Partnership discussions initiated/continued with Kilombero Sugar Company in Tanzania & IIAM, IAC and ReGeCom in Mozambique
 - Land health index under development and customization for SUSTAIN MEL
- **Outcome 3:** Investments in sustainable value chains accelerate the transition to sustainable food systems
 - Value chain scoping study carried out in Tanzania
 - Review process undertaken for SAGCOT IGG toolkit
 - Initiated engagement with apex organisations in both countries

Programme Management & Constraints

- Teams in place and hosting arrangements finalised
- Programme Steering Boards have been established in each country
- Constraints & adjustments
 - Considerable delay with baselines assessment led to delay in implementation start up, especially in Mozambique
 - Adjustment made to Mozambique plan, specifically establishment of knowledge hub to facilitate dissemination of learning and aligning landscape work to farmer cooperatives



Gender & Youth

- Gender & youth assessment completed in late 2022
- Gender & youth action plan to be finalized in 2023, together with SUSTAIN Eco
- Recommendations linked to Gender & Youth:
 - Design interventions that assist women and youth to engage in nature-based livelihoods;
 - Contribute to the advancement of youth through engagement and empowerment of youth-led initiatives;
 - Strengthen communication, awareness, and advocacy on rights and GBV prevention;
 - Adopt the collection of sex-disaggregated data.



Monitoring Evaluation and Learning

- Baseline assessments finalised for Mozambique and Tanzania
- Top up studies will be carried out in the landscape to fill gaps, especially linked to ecosystem impacts and dependencies
- Results framework revised, reducing the number of indicators from 40 to 22
- MEL plan under development and capacity building for data collection will take place in 2023

Country	Household survey	Focus Discussions	Group	Key Informant Interviews
Tanzania	362 respondents (244 in Kilombero and 118 in Ithembi) (185 female / 177 male)	4 (2 only men, 2 only women)		24
Mozambique	180 (90 female / 90 male) respondents	5 (2 only men, 2 only women and 1 mixed group)		20

Financial management

Category	Total Budget (NOK)	Year 1 Budget (NOK)	Expenditure Year 1 (NOK)	Percentage expenditure (yr 1)
Outcome 1	7,709,238	2,348,266	1,609,019	69%
Outcome 2	8,086,947	2,135,990	849,288	40%
Outcome 3	12,951,829	2,923,233	1,487,240	51%
PM, Comms & MEL	13,138,694	4,052,281	2,692,076	66%
Subtotal	41,886,708	11,459,770	6,637,623	58%
Overheads	2,932,070	802,184	464,634	7%
Total	44,818,777	12,261,954	7,102,257	58%

2023 Overview



- SUSTAIN Eco inception from Jan to July – opportunity to optimize synergies for delivery including through Gender & Youth Action Plan, Communications and Knowledge Management strategy and MEL.
- Implementation priorities:
 - **Outcome 1:** Enhance capacity on sustainable agriculture solutions and land rights
 - **Outcome 2:** Test & collect baseline data for Land Health Index
 - **Outcome 3:** Establish financial mechanism to scale up sustainability and inclusion in value chains

Thank you!



sustain/pro